

Tank for diesel with fuel dispenser box and "Ambrogio" management system



Computer with software management system

"Ambrogio"



1° VEHICLE
ENABLEMENT

2° DRIVER
ENABLEMENT

3° INSERTION OF
VEHICLE KILOMETERS

PUMP REFUELING
ENABLE



TECHNICAL FEATURES

TANK

with cylindrical horizontal axle, fitted on anti-roll support brackets. Manufactured with top quality carbon steel S235JR UNI EN10025, submerged arc welded. Painted with epoxy powders, hydraulically tested and equipped of the following accessories:

- manhole diameter 420 mm with bolt and seals.
- 3" lockable rapid coupling ring-nut, with load-limiting valve calibrated at 90% of the tank geometric capacity.
- 1"-1/2 pressure relief valve with flame-breaker mesh - h= 2,40 m.
- Externally visible level gauge with inner protection hose for the float.
- stair of access to the load.
- drain sleeve with ball valve on the bottom by 3/4" and security cap.
- eyebolts.
- plug grounding and equipotentiality.
- external suction with non-return valve 1", ball valve 1" pipe and rigid connecting to the fuel dispensing unit.



FUEL DISPENSING UNIT

inside in metal box, with tamperproof lock and a dispenser nozzle bracket, self priming electric pump with bybass, flow rate 50 or 70 or 90 litres/min (220 VAC), meter for private use with partial volume to 3 figures and progressive total to 6, flexible hose with connection 6 m length, automatic nozzle with swivel coupling, IP 55 control pannel with start-up device "Pump block" to lowest level.

READER TERMINAL

- illuminated graphic display, alphanumeric keypad, badge reader.
- Ability to refuel through double access: vehicle (key button) and user (badge).
- Requires entry of the number of km at the time of refueling.
- Stores: refueling date-time, driver, vehicle, Km and liters delivered at refueling.
- It has an autonomy of 4000 supplies without downloading the data.
- Possibility of coding and enabling up to 1500 cards.
- Connection to PC for data download via ETHERNET network connection with RJ45 or GPRS or LTE.
- Use the "AMBROGIO" software management system.

The AMBROGIO management system software: the registry of vehicles and drivers, refueling of vehicles, consumption averages, the cost per km of the vehicles, the stock of the tank, the supplies to the tank, the supplies outside the vehicles, enables and disable badges, and other functions.

All data can be printed with search functions.

CONTAINMENT BASIN

made of carbon steel sheet, self-supporting base frame already preset and bolted to the bottom of the tank, it can be placed on any type of ground, **with a capacity of not less than 110% of the overall geometric capacity**. Equipped with safety cap 1" suitable for fixing the uprights of the roofing. The basin is entirely painted with epoxy powder.

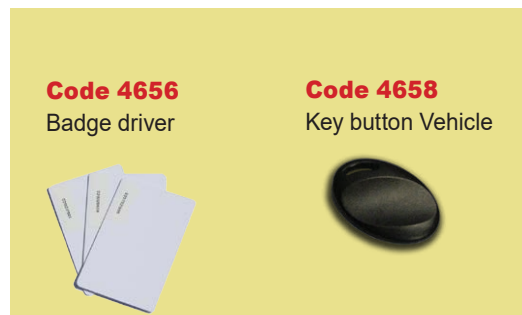
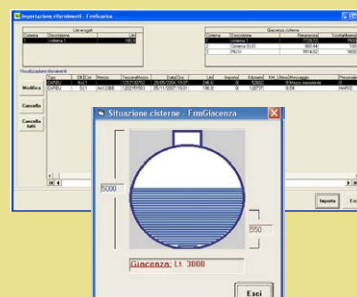
MANAGEMENT SYSTEM SOFTWARE AMBROGIO

The investment that returns.

- Know the consumption of the vehicles.
 - Know how much fuel there is in the company.
 - Prevent shortages or improper fuel withdrawals.
- These are useful information to take advantage of the work, with the pleasant feeling of control and savings.
- A great eye that watches over costs on a daily basis and the autonomy of the tank.

Code 4654

AMBROGIO management system software



Code	Capacity (litres)	Pump flow (l/min)	Dimensions (withou roof) (WxDxH mm)
CD50/GE50-4651/B50110%	5000	50	2400x3200x2000
CD60/GE50-4651/B60110%	6000	50	2400x3200x2200
CD90/GE50-4651/B90110%	9000	50	2400x3900x2300

CD50/GE70-4651/B50110%	5000	70	2400x3200x2000
CD60/GE70-4651/B60110%	6000	70	2400x3200x2200
CD90/GE70-4651/B90110%	9000	70	2400x3900x2300