

# Multi-user diesel fuel dispenser

Diesel distributors for private use that can only be disbursed by authorized personnel with codes or magnetic keys. A dedicated software allows you to transfer data to a PC either by means of the magnetic key or by cable connection.



**Code 4560**

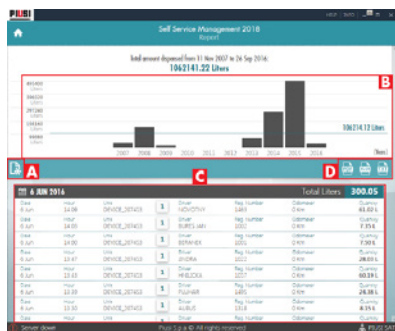
Distributor CUBE 70MC  
70 l/min

**Code 4690 MC**

Distributor  
Self Service 70MC  
70 l/min.

**Code 4695 MC**

Distributor  
Self Service 100MC  
90 l/min.



## PERFORMANCE:

- 50 user for CUBE MC - 80 User for Self service MC
- Pre-selection dispensing.
- +/- 0.5 % precision within the flow-rate range.
- Local memory storage data for the last 255 deliveries. operations.
- Possibility for registration vehicle number and odometer.
- Dispensing date and time control.
- Magnetic key or code for user recognition.
- Special software for managing and printing operations.
- Possibility to transfer the data in a separate file.

## EQUIPMENT

- Self-priming vane pump, equipped with bypass.
- Pump suction mesh filter and water separator filter.
- Pulsar meter with oval gears.
- Automatic nozzle with swivel connector and 4 m. diesel fuel hose
- Electronic unit with keyboard and display for registration of codes
- Key reader panel.

The Distributor is equipped of:

- **code 12708:** For access to supplies by key users and data download to PC with key manager without the need for cable connection

Or:

- **code 12710:** For data download to PC through cable connection up to 800 meters.

**code 12708**

Composed by:

n. 10 user keys

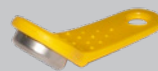
n. 1 Manager key for data transfer on PC.



Key player Manager to connect to the PC, Usb pendrive with software for managing supplies.

**code 12494**

Kit 10 user keys



**code 12710**

Composed by:

Converter for direct connection to PC, Usb Pendrive with software for managing supplies.

